



**READ THESE INSTRUCTIONS THOROUGHLY BEFORE INSTALLATION KEEP THESE INSTRUCTIONS FOR FUTURE REFERENCE.**

**IMPORTANT:**  
This product must be installed by a qualified electrician or competent person, and in accordance with current building and IET wiring regulations.

**BOX CONTENTS**

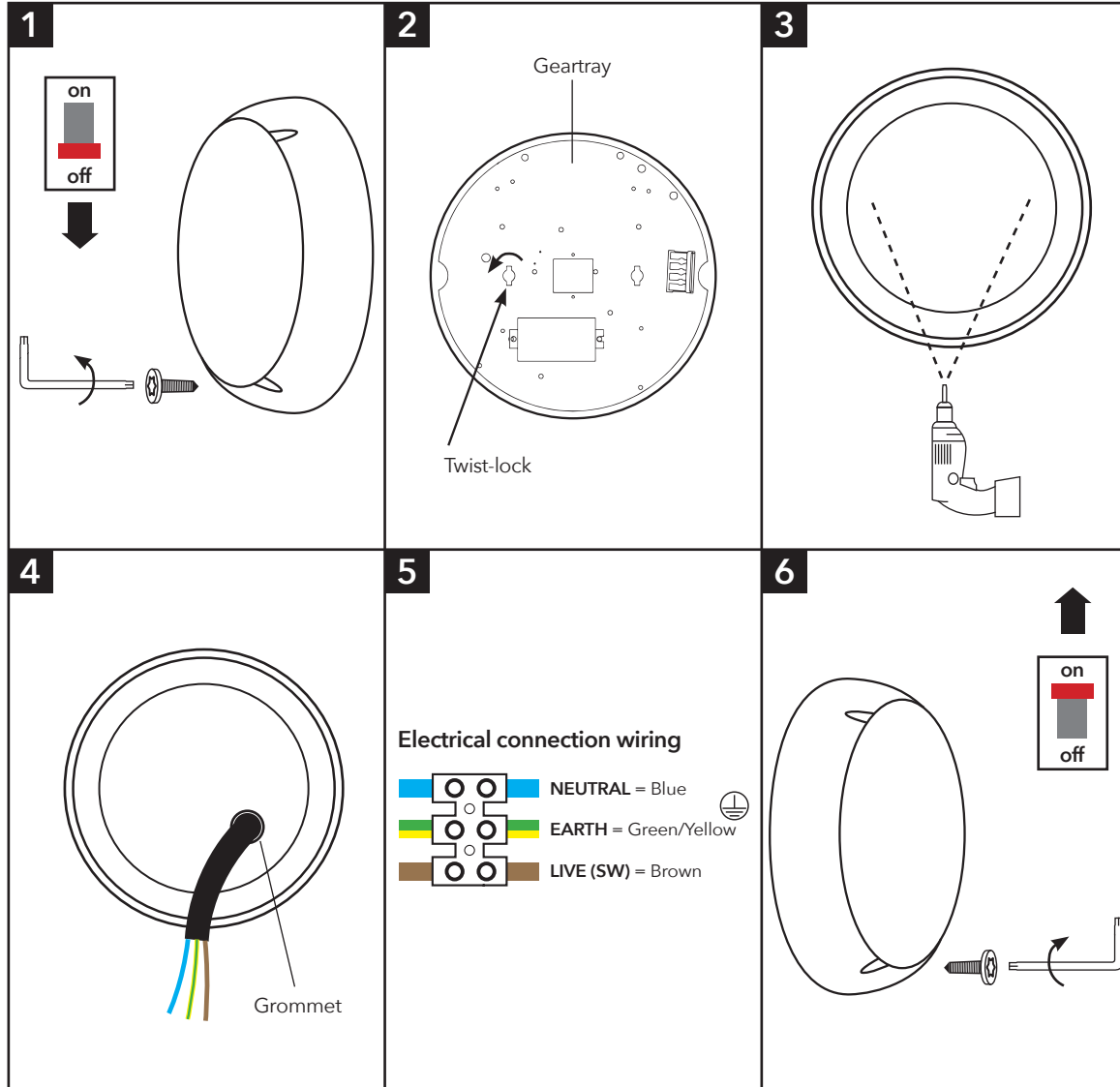
This lighting fixture has been properly packed to avoid damage during transit. Before commencing with the installation carefully inspect the luminaire to confirm there is no damage. **DO NOT INSTALL** if any damage has occurred to the fixture or any of its components.

- Light Fitting
- Instruction Manual
- Fixings

**TOOLS REQUIRED**

- Drill
- Anti-Tamper Tool
- Screwdriver
- Cable

**INSTALLATION INSTRUCTIONS**



**PLEASE READ THESE INSTRUCTIONS BEFORE INSTALLATION.**



**WARNING: Risk of electric shock! Isolate the mains power before proceeding.**

- Turn off the mains power before performing inspections, installation, or removal
- Verify that the supply voltage is correct by comparing it with the luminaire label information
- It is the installers responsibility to ensure installation is suitable for the total load of the luminaire(s). The supply cable, fuses/circuit breakers must be correctly rated for the electrical load and considering for any transient inrush currents that may occur
- Do not perform insulation strength or resistance tests on installed luminaire(s) connected

1. Using the tool provided, remove the screws securing the diffuser
2. Twist the locking tab to loosen and remove the geartray.
3. Drill appropriately sized holes through your chosen mounting points in the base
4. Install grommet to your chosen cable entry and pierce, making a hole just large enough to make a tight fit around the incoming mains cable. Carefully thread cable through grommet
5. Secure the fitting in place. Note: If protection against ingress of moisture is required the heads of screws must be covered with a silicone or similar sealant
6. Wire as per diagram (5)
7. Please see overleaf for instructions on how to set all sensor versions
8. Replace the geartray and twist the locking tab to secure in place, then refit the diffuser
9. Re-connect the mains supply

^Lm/W figures based on 4000K output.

## DISPOSAL

Disassembly instructions for end of life disposal available on website.

Disposal of Electronic Equipment WEEE Directive 2002/96/EC This product falls within the scope of the Waste Electrical & Electronic Equipment Directive (WEEE), which means the product should not be disposed of as normal household waste. Please recycle where facilities exist or check with your Local Authority. RoHS - All components and materials used in this product are RoHS 2002/95/EC compliant.

Specifications may change from time to time. The information contained in this leaflet is for guidance only and should not be considered as always accurate and should be treated as not representative.

## WARRANTY

This luminaire is warranted for a period of 5 years from the date of purchase\*\*. The backup battery pack in the emergency version is warranted for a period of 12 months. The warranty could be invalidated should the light fitting not be installed according to these instructions, outside the scope of the specification or the product has been altered or tampered with in any way. Please see website for terms and conditions.

## PRODUCT TEMP SPECIFICATION

Standard -20 to +40°C  
Emergency 0 to +30°C

## MICROWAVE SENSOR SETTINGS

**Detection Range:** This determines the effective range of the motion. Note that reducing the sensitivity will also narrow the detection range.

**Hold Time Duration:** This determines the time the fitting remains at 100% illumination following motion detection.

**Daylight Setting:** This setting holds off the 100% light output should there be sufficient daylight.

### STANDARD ON/OFF SENSOR

DETECTION AREA			HOLD TIME			DAYLIGHT		
1	2		3	4	5	6	7	8
ON	ON	100%	ON	ON	5S	ON	ON	ON
ON	-	75%	ON	ON	- 30S	ON	ON	ON
-	ON	50%	ON	-	1Min	-	ON	-
-	-	25%	ON	-	3Min	ON	-	-
			-	ON	5Min	ON	-	-
			-	ON	10Min	-	-	-
			-	-	20Min	-	-	-
			-	-	30Min	-	-	Disable

## STEP DIM DRIVER SETTINGS

DETECTION AREA			HOLD TIME			DAYLIGHT SENSOR			STAND-BY PERIOD			STAND-BY DIM LEVEL		* OUTPUT CURRENT			
I	II		1	2	3	I	II	III	I	II	III	I	II	450mA	S1	S2	S3
I	ON	100%	I	ON	ON	I	ON	ON	I	ON	ON	I	ON	ON	ON	ON	ON
II	-	50%	II	ON	-	II	ON	-	II	ON	-	II	-	ON	ON	-	ON
			III	-	ON	III	-	ON	III	-	ON	III	-	-	-	-	-
			IV	-	-	IV	-	-	IV	-	-	IV	-	ON	ON	-	-
														320mA	-	-	-
														300mA	-	-	-

\* Do not change output current unless instructed or this will void warranty.

Installation Engineers Contact Details:		Luminaire Reference / Location	
Name:		Tel:	

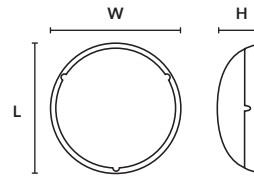
Luminaire Details:	Full Recharge Duration <b>24 Hours</b>	Emergency Duration <b>3 Hours</b>	Lamp Type <b>LED</b>
--------------------	----------------------------------------	-----------------------------------	----------------------

ROUTINE TEST RECORD										
Type Test	Year 1		Year 2		Year 3		Year 4		Year 5	
	Signed	Date	Signed	Date	Signed	Date	Signed	Date	Signed	Date
Functional 1										
Functional 2										
Functional 3										
Functional 4										
Functional 5										
Functional 6										
Functional 7										
Functional 8										
Functional 9										
Functional 10										
Functional 11										
3hr Duration 12										

\*\* Please see our website for more detailed information on warranty.

## ROYD ANTI-TAMPER BULKHEAD DIMENSIONS

Part No.	Description	Watts	L(mm)	W(mm)	H(mm)	Weight
430157	Royd 3CCT Anti-Tamper Bulkhead	12W	305	305	110	0.96Kg
430158	Royd 3CCT Anti-Tamper Bulkhead	20W	305	305	100	0.96Kg

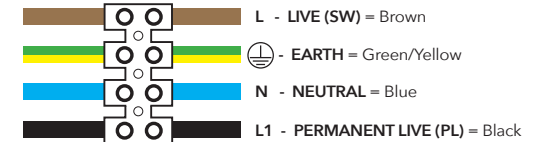


## Wiring instructions for units equipped an with EMERGENCY function

Emergency lighting luminaries must be installed and maintained in accordance with the emergency lighting standard BS 5266-1

1. Connect incoming earth cable to 'Earth' terminal on connector block.
  2. Connect incoming neutral cable to 'Neutral' terminal on connector block.
  3. For the emergency unit to work correctly, please ensure that an uninterrupted permanent live feed is present and is connected directly to the 'Permanent Live' terminal of the mains terminal block. Please ensure there are no switches, PIRs etc within the permanent live feed, constant switching of the emergency pack could result in premature battery failure.
  4. Connect incoming switched live cable to the terminal marked "Switched Live"
- NOTE: If there is no switch live feed and the unit has a microwave sensor, simply bridge across from the "Permanent Live" to the Switch Live" on the mains terminal block.**
5. There should be a loose flying lead connected to the battery. This needs to be attached to the flying lead from the emergency control unit.
  6. Following power up the green LED indicator should illuminate to indicate charging. If power to the unit is disrupted or isolated, the unit indicating green LED will switch off, triggering the emergency LEDs to illuminate.
  7. Please allow 24 hours charge before first emergency test.

### EMERGENCY FITTINGS ONLY. EARTH CONNECTION REQUIRED.



## Self-Test EMERGENCY function

The self-test version of emergency is fitted with control gear that will carry out periodic functional tests every 1 month and full duration test every 12 months.

Fault/Test/Status	Reason
Battery fully charged and operational	Standard daily use
1 Sec ON 1 Sec OFF	Battery Charging
Battery Failure	Battery is disconnected or damaged/faulty
0.5 Sec ON 0.5 Sec OFF	Duration Test Failure
3 Sec ON 3 Sec OFF	Automatic Testing - Function 5 minute test (Every 30 days)
3 Sec ON 1 Sec OFF	Automatic Testing - Duration test is 3 hours (every 12 months)

This product contains a light source of energy efficiency Class E.